

Office of Continuing Professional Education

A MISSION OF COMMUNITY SERVICE
A LAND GRANT TRADITION OF OUTREACH AND EDUCATIONAL EXCELLENCE



IMPACT REPORT FISCAL YEAR 2023



RUTGERS

New Jersey Agricultural
Experiment Station
OFFICE OF CONTINUING
PROFESSIONAL EDUCATION

Who We Are

For more than 100 years, the Office of Continuing Professional Education (OCPE) has provided outreach and educational programming for New Jersey's diverse population, supporting community engagement on the broad array of social, scientific, creative, and impactful topics embraced by our university family. By working closely with Rutgers Cooperative Extension (RCE), university faculty and staff, private industry, and local, regional, and nationwide organizations, we have attracted a team of dedicated instructors who consistently exceed our participants' expectations. We strive to make quality and customer service the hallmark of our programs.

Established in 1906 by Dr. E.B. Voorhees, the New Jersey Agricultural Experiment Station's (NJAES) OCPE has grown from serving 22 farmers in New Jersey to serving more than 21,000 professionals from around the world in 2023. Our programs have expanded from the single area of agriculture technology in Dr. Voorhees' day to topics including green industries, environmental management, life sciences, and public health.

We have recently expanded our online course offerings, broadening and democratizing our reach and strengthening our relationship with those who cannot attend in-person courses for reasons of hardship—including cost, disability, or transportation—as well as convenience. OCPE is committed to growing a community of learning across disciplines, industries, and cultures incorporating Cooperative Extension research and practice. Regardless of the program topic, our customers' needs will remain at the center of our vision for the future.

VISION

The Rutgers NJAES Office of Continuing Professional Education seeks to measurably improve the quality of life of the residents of New Jersey and beyond through education and public service. Through the commitment and teamwork of our instructors and staff, we are dedicated to helping our society achieve a sustainable balance among the goals of human development, economic prosperity, and environmental quality.



Table of Contents

- 02 Fiscal Year 2023 Highlights
- 04 By the Numbers
- 05 IMPACT: Academic Master Plan
- 06 IMPACT: Critical Issues that Face Our Communities
 - 06 Maintain Viable Agriculture and Aquaculture
 - 08 Ensure Health Outcomes: Food, Nutrition, and Health
 - 08 Protect and Sustain Our Resources
 - 12 Ensure Positive Outcomes for Our Youth
 - 13 Build Sustainable and Resilient Communities
- 15 IMPACT: Financial
- 15 Acknowledgment of Support
- 16 Our Team
- 16 Where to Find Us



*Pictured above, clockwise from top left:
Students join Department of Food Science professor Beverly Tepper to celebrate the final day of the Grape & Wine Science Certificate Program.*

Instructor and REHS Sue Muhaw reviews a septic system installation plan with Environment and Public Health (EPH) program participants.

Ralph Tiner, a nationally recognized wetlands expert, leads students through wetland plant identification exercises in the field.

MISSION

OCPE provides a multitude of opportunities for lifelong learning by building bridges between the needs of society and the resources of the NJAES and Rutgers University. With community service as our focus, we actively seek to define and meet the educational and outreach needs of the citizens of New Jersey in alignment with the mission of NJAES. We offer programs and services that enhance the vitality, health, sustainability, and overall quality of life for the community members and organizations who participate in them.

Fiscal Year 2023 Highlights

New Courses Designed Specifically to Meet the Needs of the Communities We Serve:

- Grape and Wine Science Certificate
- Hot Topics in the Environmental Industry
- Industrial Waste Treatment
- Introduction to Botany and Botanicals
- Introduction to Drinking Water
- Introduction to Wastewater
- Mold Evaluation
- Native Plants for Landscape and Nursery Professionals
- Principles of Vapor Intrusion for Regulators
- Sparking Your Creativity and Innovation
- Staff Development Days (multiple offerings)
- Streambank Restoration: Planning, Engineering, and Implementation.
- Surviving a Declared Disaster: Making Your FEMA Application Manageable
- Urban Stormwater Management: Building Resilient Communities

Supporting Our Communities of Learners:

- New Jersey Pesticide Applicator Exams were offered online, in-person, and in conjunction with two conferences this year, New Jersey Landscape Contractors Association and New Jersey Green Expo, to meet our learners where they are.
- Provided in-house training in safe rigging and hoisting techniques for Middlesex Water Company, which led to an additional series of classes to train the employees at a sister water utility in Delaware.
- Created a radon mitigation course for Wake County, North Carolina after they discovered a severe problem with radon in their water.
- Contracted by GEI Consultants to provide Continuing Education Credit Processing and Management Services for the Manufactured Gas Plant Industry Conference in September 2022.
- Worked closely with the Garden Club of New Jersey, Princeton Chapter-American Rhododendron Society, and the New Jersey Association of Professional Soil Scientists to help schedule campus meeting space.

Supporting Rutgers Undergraduates:

OCPE offers opportunities for our RU undergraduates to benefit from our industry-based educational offerings. In FY23, students took advantage of the following opportunities:

- *Effective Environmental Field Sampling and Data Collection*. This asynchronous, online course provides students who will be entering this field with practical training.
- *Bee-ginner Beekeeping*. This asynchronous, online course provides college students with a practical educational opportunity and provides the industry with future beekeepers.
- OCPE collaborated with Dr. Carey Williams, School of Environmental and Biological Sciences faculty member and extension specialist in Equine Science, to attract a continuing education audience, and thus an increase in registrants for the spring 2023 offering of her undergraduate class *Equine Nutrition* (11:067:390:90).



Supporting Our RU and Other Professional Colleagues

OCPE offered registration, coordination, marketing, logistical, administrative, and other services to support various Rutgers departments and their professional colleagues during FY23.

- Provided coordination, registration, and logistical support for the *Fields of Devotion* film premiere.
- Provided registration services for the New Jersey FoodTech 2023 Conference.
- Provided registration and payment processing services for the North American Cranberry Research and Extension Workers (NACREW) Conference.
- Provided training at no/reduced cost to SEBS Human Resources personnel, Rutgers Gardens employees, our RCE colleagues, and New Jersey Department of Transportation.
- Arranged for in-person pesticide applicator exam sessions specifically for private applicators at the request of an RCE colleague.
- Arranged for meeting rooms on campus for multiple Rutgers Departments, including the RU Foundation Dev. Assoc., RU-NB Chancellor Office, Rutgers Urban Forestry Program, and Rutgers Plant Breeding Coordinators.
- Organized and executed a Professional Development Day for the Graduate School of Education.
- Worked closely with Rutgers Gardens to choose areas to prune and have also offered to lend a hand with the removal of invasive species.

“

Working with OCPE on the NACREW conference was wonderful. They were incredibly helpful throughout the process and were always quick to respond to our requests. Their support allowed us to focus on putting on a great conference. I can't say enough how much I appreciated their assistance!

*- Lindsay Wells-Hansen, Ph.D.
Sr. Agricultural Scientist, Ocean Spray
Cranberries*



By the Numbers

In FY23 alone, OCPE served more than 21,000 registrants through our nearly 600 program offerings. Our wide variety of workforce development trainings and short courses were able to reach 5,000 more individuals—a 37% increase in people served!—in New Jersey and beyond compared to the previous fiscal year. We have taken steps to broaden our reach by offering our courses in online and hybrid formats as well as traditional classroom settings, enabling more members of the community to benefit from the skilled instruction of our subject matter experts than ever before.

We take pride in knowing that approximately 18% of our annual business comes from repeat customers, demonstrating the quality of our programs and how members of the community have come to see us as the place to go for their continuing education and training needs.

OCPE offers recertification, licensing, and professional competency credits in accordance with the unique guidelines of 61 different governmental, non-profit, and/or professional entities including:

20

New Jersey Government Agencies and State-Based Organizations

6

States with Government Agencies (CT, DE, MA, MD, NY, PA)

24

National Organizations

OCPE Programs Offered and Community Members Served

580

Programs Offered

365

Online Programs Offered

21,602

Registrants

17,751

Unique Registrants



IMPACT: Academic Master Plan

Our work at OCPE supports and strengthens the Rutgers Academic Master Plan.

PILLAR I: SCHOLARLY LEADERSHIP

A key objective of Pillar I is the investment in infrastructure to serve learners in a broad range of environments and instructional modalities and OCPE is committed to providing convenient, secure access to our programs for all of our participants. Sixty-two percent of our programs are now offered online and that online number continues to grow as we collaborate with private and governmental organizations to provide quality educational experiences. OCPE also partners with Rutgers Gardens and other University facilities to provide experience-based, hands-on learning opportunities for our participants. We have upgraded the wireless Internet capabilities and are investing heavily in smart technology to transform our classrooms into cutting-edge learning centers that harness recent innovations in remote teaching and combine them with the in-person guidance of our expert instructors.

PILLAR II: INNOVATIVE RESEARCH

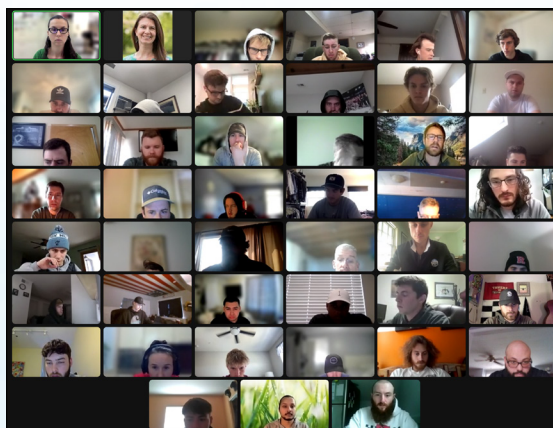
The staff of OCPE work closely with faculty and staff of New Jersey Agricultural Experiment Station and the School of Environmental and Biological Sciences, professional organizations, and government agencies to make sure we are always aware of new research findings, initiatives, and programs—or changes to current ones—that will require information exchange or training. Several staff members serve on educational committees that set guidelines for certification and training, ensuring our office is among the first to know—and act—to get information on critical changes into the hands of those in our community who need it most.

PILLAR III: STUDENT SUCCESS

The cornerstone of OCPE’s work is to improve the lives of individuals through training and knowledge transfer. Accessibility to meaningful programs is the reason we are here, and the reason we are trusted by our partners to expand and improve learning opportunities—allowing students to apply knowledge gained in the classroom to real-world settings and work cross-culturally in and among diverse teams—that will ultimately strengthen both the workforce and organizations that employ them. Our classes provide training for individuals to obtain the professional licenses and/or certifications that enable them to advance in their current employment position, seek a new position, or transition to an entirely new career path.

PILLAR IV: COMMUNITY ENGAGEMENT

Outreach is critical to Rutgers’ mission as a land-grant university. We work in concert with the academic and research faculty of the New Jersey Agricultural Experiment Station and the School of Environmental and Biological Sciences and we promote collaborations with local and county departments as well as the multicultural communities they serve. These partnerships are a core component of our work at OCPE, and the knowledge, skills, and values learned through our programs lead to life-changing career opportunities for participants.



IMPACT: Critical Issues that Face Our Communities

Maintain Viable Agriculture and Aquaculture


Turfgrass Management Education

The Rutgers Professional Golf Turf Management Program (RPGTMP) has graduated more than 4,000 turfgrass managers over the past 60 years. Our alumni hail from all 50 states and more than 20 foreign nations. Many program alumni have gone on to reach the top of their profession as superintendents at some of the highest profile golf courses in the country, including Baltusrol Golf Club, Oakmont Country Club, and Shinnecock Hills Golf Club. Applicants to the program are a diverse group and have included engineers, accountants, veterinarians, artists, lawyers, historians, teachers, and even a retired general. RPGTMP provides opportunities to students who want a career in golf turf management, but for whom the traditional four-year diploma is not feasible or desired.

For over 25 years, the *Three-Week Turf Preparatory Course* has served the needs of people who are considering entry into the field of golf turf management. The course also offers the opportunity for golf club managers and those with similar positions to understand more about golf turf management. This program is currently offered as a fully online learning experience and has attracted students from across America and the globe.

RPGTMP contains approximately 500 contact hours of learning, including formal classes, labs, field trips, hands-on projects, and a structured internship on a golf course or sports field.

This year's RPGTMP contained three "second generation" learners, the sons of New Jersey golf course superintendents who are themselves alumni of the program: Aidan and Patrick Busby, Ricardo and Jennifer Torres (pictured), and Justin and Rick Broome.



1000+
total contact
hours of training
provided to

60+
Years
RPGTMP
has been
running

4000+
Alumni from

50
states and
more than

150
participants in
FY23

20
foreign nations

“ Rutgers Professional Golf Turf Management Program allowed me to become a more confident person. Having been one of three women during my class session with a female class president was a true privilege and I am excited to see the expansion of women in this field.

- Amy Good, 2021 Two-Year Certificate Program Graduate, Buffalo Hill Golf Club, Columbia Falls, MT

Bubba Wright, 2010 graduate of the RPGTMP, was honored by the United States Golf Association (USGA) with the presentation of the E.J. Marshall Platter at the conclusion of the final round at the 2023 U.S. Women's Open at Pebble Beach Golf Links in Pebble Beach, CA. The E.J. Marshall Platter recognizes leaders in golf course management who demonstrate commitment, expertise, and outstanding collaboration with the USGA to present a well-maintained course, worthy of hosting a national championship and the world's best players.



Animal Science

OCPE and SEBS Department of Animal Science have long collaborated to offer continuing professional education students the opportunity to attend equine science classes alongside undergraduates. Through a shared learning environment, continuing education students gain access to valuable information and cutting-edge research findings, while undergraduate students learn from their professional classmates about the course's real-world applications.

Grape and Wine Science Certificate Program

The Grape and Wine Science Certificate course is a practical, affordable, and accessible program that addresses an underserved but growing market in the state. This certificate program was developed in conjunction with Dr. Beverly Tepper, SEBS Food Science professor, and includes four weeks of formal training, followed by a structured internship.



**\$4.69
BILLION**

Generated by the
Wine Industry in
Economic Activity in
New Jersey

*National Economic Impact
Study of the American Wine
Industry 2022 by John Dunham
& Associates, New York*

Landscape Management and Commercial Horticulture

With more than 60 programs serving landscape contractors, lawn and tree care professionals, turf managers, and home gardeners, OCPE has an influence that reaches down to the roots of the Garden State. Our programs range from one-day classes to multi-week seminars and career development certificate programs. Each year we serve more than 1,000 customers seeking new work skills, an entirely new career path, or just the simple pleasure of growing beautiful plants.

OCPE's landscape courses cover a wide range of topics and many offer necessary New Jersey continuing education credits for pesticide applicators, licensed tree experts, licensed irrigation contractors, community urban forestry workers, and more. Most classes feature a generous mix of hands-on activities, classroom instruction, and applied problem-solving exercises that help landscape management professionals solve their toughest challenges.

Selected Course Topics:

- Business Skills for Landscape Contractors
- Chainsaw Safety
- Diseases, Insects, and Weeds of Turfgrass and Ornamental Plants
- Greenhouse Crop Production
- Hazardous Trees
- Irrigation: Design/Maintenance/Repair
- Landscape Design and Plant ID
- Organic Pest Control and IPM
- Park Management
- Soil/Plant Relationships
- Small Engine Repair
- Tree/Ornamental Care and Pruning

We currently offer 4 different certificate programs:

Landscape Management
Landscape Business Management
Natural Turf and Landscape Management
Public Grounds Management

“ *The courses have a direct impact on [participants'] marketability in the work force.*

- Dr. George Hamilton,
Specialist, Rutgers Cooperative Extension

“ *I enjoyed taking the classes for the landscape management certificate. Some classes turned out to be real hands-on workshops [which were] ideal for me as a learner non-native in English.*

- Mathilde Burlion, course participant,
Landscape Lighting: Design and LED
Technology



Beekeeping

OCPE's beekeeping courses are taught by Rutgers Cooperative Extension faculty and staff, as well as experienced apiarists. The range of course offerings are designed for every level of experience, from novice to professional, and they fulfill the legal requirements of the State of New Jersey for beekeeper education.



Studies have shown that the practice of beekeeping can be therapeutic for veterans struggling with PTSD. Accordingly, all beekeeping classes are submitted for approval to receive educational benefits for veterans through the GI Bill.

Protect and Sustain Our Resources

Environmental Laws, Regulations, and Enforcement

Finding the balance that preserves the natural environment and supports a healthy economy begins with a thorough understanding of environmental laws and regulations. Our programs help explain the "why" as well as the "how" of regulatory compliance.

Program Highlights:

- New Jersey Department of Environmental Protection (NJDEP) has exclusively partnered with OCPE to administer the New Jersey Subsurface Evaluator Certification Exam.
- OCPE has developed a remotely proctored, online version of the New Jersey Subsurface Evaluator Certification Exam to extend opportunities beyond the immediate region and ensure that issues of distance, inconvenience, or other travel-related hardships are not a concern for those aspiring to sit for the exam.
- OCPE has developed an online asynchronous version of the NJDEP's Underground Storage Tanks Training for Class A & B Operators, a required training program that must be completed prior to sitting for the state exam. The increased availability of this course has allowed well over 2,200 New Jersey operators to receive this critical training and enabled hundreds of gas stations, many of them family-owned small businesses, to continue to operate.

Selected Course Topics:

- Air Quality Permitting
- Environmental Air Compliance Audits
- Environmental Law for Attorneys and LSRPs
- NJ Pollution Prevention Act
- PCBs/Site Remediation
- Underground Storage Tanks

Permitting Procedures

A cornerstone of our environmental regulatory programs is our partnership with the NJDEP to provide practical instruction on how to comply with New Jersey's environmental permitting procedures. Led by the NJDEP officials responsible for administering permits, each workshop focuses on how to prepare complete and technically sound applications. Since 1988, tens of thousands of professionals have participated in one or more of our permitting programs. Many more are expected to attend in the future as programs are revised and expanded in response to the ever-changing rules and regulations governing New Jersey's environmental permitting processes.

OCPE Trained
500
Air Compliance
Auditors

Licensed Site Remediation Professional

A Licensed Site Remediation Professional (LSRP) is defined as an individual with responsibility for oversight of environmental investigation and cleanup. The highest priority of an LSRP is protection of public health and safety and the environment. OCPE offers training that meets the needs of LSRPs in New Jersey. The *LSRP Case Study Training – The Next Generation* course satisfies the pre-requisite course requirement to sit for the New Jersey LSRP Licensing Exam.

Selected Course Topics:

- Ecological Evaluation and Risk Assessment
- Environmental Law for LSRPs
- Field Sampling and Data Collection
- Geology, Hydrogeology, and Chemistry
- Glacial Deposits of New Jersey
- Groundwater in Fractured Bedrock
- Litigation and Dispute Resolution
- NJ Wetlands Management for LSRPs
- Technological Advancements in Assessment and Remediation

“ *The case-study/interactive component was great, realistic, and covered aspects and questions that have come up routinely in my daily work.*

- Nicholas Dufficy, Project Manager, BBJ Group, LLC, MN

Geographic Information Systems/Geomatics and Environmental Planning

Geomatics is the name given to a field that combines the related technologies of Geographic Information Systems (GIS), Global Positioning Systems (GPS), Database Management, Internet applications, and Remote Sensing. Geomatics harnesses the power of computer analysis and instantly creates maps that can reveal patterns and relationships previously hidden among complex data. It is a powerful technology with applications in environmental planning, business marketing, health care, criminal justice, historic preservation, and even garbage collection.

Selected Course Topics:

- ArcGIS: Introduction; ArcGIS: Editing and Data Development
- Python: Introduction

Drinking Water and Wastewater Management/Operations

OCPE plays a vital role as a resource for education and training for the state’s 5,000+ licensed drinking water and wastewater operators. Since 1982, OCPE has worked closely with SEBS Department of Environmental Science, the New Jersey Department of Environmental Protection (NJDEP), the state’s drinking water and wastewater utilities, and professional organizations such as the New Jersey chapter of the American Water Works Association to provide courses that have improved and enhanced the skills of operators and utility and public works personnel.

In 2010, OCPE *began* offering several multi-week courses required by NJDEP for individuals seeking to take various state licensing examinations. Since that time, our catalog has expanded to include both introductory and advanced level courses in wastewater treatment, drinking water operations, and wastewater collection systems.

Classes have been individually customized and presented on-site at drinking water/wastewater facilities, public works departments, municipal authorities, and private employers. Many are also now offered online, greatly increasing their accessibility and continuing to meet the training needs of this large and vital group of professionals.



Drinking Water and Wastewater Management/Operations *(continued)*

Selected Course Topics:

- Chemistry and Math Refreshers
- Discharge Monitoring Reports
- Electricity, Motors and Meters/Variable Frequency Drives
- Examination Review/Study Skills for Licensing and Certification
- Management/Leadership Skills
- Instrumentation for Drinking Water and Wastewater Operations
- Microbiology of Activated Sludge and Microbiology for the Non-biologist
- Pump Operation and Maintenance
- Rigging and Hoisting Safety
- Technical Writing/Excel/Request for Proposals

“OCPE’s classes teach resourcefulness and the ability to adapt—something that is certainly instrumental in producing a successful workplace and company culture.

- Terry Tomsy, Former
Corporate Trainer, PSE&G

Soil and Water Resource Management

A changing climate and more powerful storms means that the prospect of flooding threatens more and more New Jerseyans. To help protect people and property from the vagaries of rising flood waters and aging dams, OCPE programs help engineers, planners, and erosion control specialists master the latest science and computer and engineering technologies for stormwater control.

Stormwater volume is only one of the challenges faced by professionals in the fields of hydrology, hydraulics, and water resource management. Increasingly, our attention is turning to improving water quality in stormwater planning and groundwater resource management. Drawing on expertise from Rutgers University, the New Jersey Department of Environmental Protection, and private industry, we offer classes in a wide range of topics and formats.

Selected Course Topics:

- Flood Hazard Area Certificate Program
- Coastal Community Resilience: An Overview of Strategies, Tools, and Science
- Dam Removal: Design, Planning, and Implementation
- Restoration Ecology
- Urban Stormwater Management: Building Resilient Communities

Wetlands Management

OCPE is one of the largest university-based providers of continuing education in wetland management in the nation. Graduates of our certificate program can be found managing wetlands, identifying their boundaries, and preserving their ecological functions here in the Garden State and across America. The majority of our classes are approved for continuing education credits by the Society of Wetland Scientists Professional Certification Program and the Society of American Foresters. OCPE serves a diverse audience including engineers, land surveyors, foresters, consultants, landscape architects, transportation and highway

professionals, soil scientists, teachers, planners, developers, and real estate appraisers.

“I teach in the program because it allows me to convey practices that I’ve developed and learned over 50 years in the field to students new to wetland science and environmental protection. The courses I teach provide students with essential skills in the daily work as environmental scientists [and] should help them advance in their profession.

- Ralph Tiner, Retired Regional
Wetland Coordinator, U.S. Fish and
Wildlife Service



A nationally recognized certificate in Wetland Delineation can be earned through taking a complement of OCPE courses and successfully passing an exam.

New Jersey Recycling Certification Series

For more than 30 years, OCPE has teamed up with the NJDEP Division of Sustainable Waste Management and the Association of New Jersey Recyclers (ANJR) to offer this comprehensive, 21-day one-of-a-kind series of courses that gives attendees the skills they need to operate a successful and efficient recycling program.

Certified Recycling Professionals (CRPs) update their skills and knowledge and maintain their certifications through continuing professional education. OCPE partners with organizations such as the New Jersey League of Municipalities, the Northeast Recycling Council, and the Solid Waste Association of North America to offer multiple opportunities for recertification credits and programs. Recent initiatives such as New Jersey's mandatory food waste recycling law and the environmental justice project review process were introduced into the series courses during FY23 to meet the evolving educational needs of New Jersey's municipal recycling coordinators.

“ Through attending the recycling classes, I went on to become the Borough of New Milford's Recycling Coordinator [and] have achieved quite a bit—including a recent proclamation from the mayor recognizing my efforts to improve recycling in town.

- Julia Burge, CRP, Former Recycling Coordinator, Borough of New Milford.



Selected Course Topics:

- Communication Skills/Ethics/Ergonomics
- Economics of Recycling
- Managing a FEMA Filing
- Management/Leadership Skills
- Compost Operator Certification
- New Jersey Recycling: Practice and Theory
- Recycling: Case Studies/Collection Techniques
- Recycling: Health and Safety; Public Policy

Pesticide Applicator Certification Exam Registration

To earn or maintain their licenses, commercial and private applicators in New Jersey are all required to pass exams sanctioned by the Department of Environmental Protection (NJDEP). All registrations for the pesticide certification exam are now done exclusively online using a system developed by OCPE, the Pesticide Applicator Certification Exam Registration (PACER) system, on a grant from the state.

OCPE has processed registrations, verified uploaded requisite documents, reviewed exam session videos, and transmitted grades and data to the NJDEP licensing system for more than 6,000 exams since the system was launched in January 2020. OCPE continues to make improvements to increase the efficiency, effectiveness, and reporting capabilities of the PACER system.

CORE Basic Pesticide Training

The CORE Basic Pesticide Safety training class is the first step in the state-mandated process required to receive a pesticide applicator license. Students learn the proper procedures necessary to handle the pesticides used to control pests in various categories, including schools, agriculture, forests, landscapes, aquatics, general vegetation, industrial structures, households, mosquitoes, campgrounds, sewers, drinking water, and more.

OCPE offers this training in both English and Spanish.

Ensure Health Outcomes: Food, Nutrition, and Health

Food Science and Safety

In the United States, Rutgers is a recognized research leader in food and pharmaceutical product development. Engineers, chemists, biologists, chefs, and managers travel from five continents to participate in OCPE food science courses, conferences, and symposia. Through OCPE, food and pharmaceutical industry researchers can learn everything from cutting-edge research in sensory evaluation to the basic food safety training for production line workers.

Selected Course Topics:

- Sensory Evaluation
- Making Sense of the Numbers: Statistics for Food Scientists

OCPE has worked closely with the faculty at SEBS and Rutgers Cooperative Extension to offer timely courses in food safety. Our programs have reached more than 5,000 food service managers in schools, restaurants, hospitals, office buildings, and even prisons. OCPE has greatly expanded the number and variety of customized training programs developed for food processing firms. By literally working on the food processing line, we help target critical control points for food safety.

Selected Course Topics:

- Practical Food Microbiology
- Food Processors HACCP
- Better Process Control School



“ Working with another department helps build lasting relationships and partnerships, while doing outreach to students we would not normally interact with. We are positively impacting the students by providing a fun, interactive learning experience.

- Mellonie O’Neill, Senior Manager – QA Compliance and Training, Rutgers Food Innovation Center

Eastern Regional Radon Training Center at Rutgers

Founded in 1989, the Eastern Regional Radon Training Center (ERRTC) at Rutgers University is one of four Regional Radon Training Centers established by the U.S. Environmental Protection Agency. We provide training for professionals doing the important work of measuring and reducing high levels of radon, an odorless, invisible gas that is responsible for approximately 21,000 lung cancer deaths in the U.S. every year.

We offer courses to prepare students for the necessary National Radon Proficiency Program (NRPP) or National Radon Safety Board (NRSB) radon measurement certification. In New Jersey, the NRPP exam is now the accepted standard for certification. Once certified, radon professionals must earn continuing education credits to maintain their licenses. Training at Rutgers can be the first step someone takes toward becoming a Certified Radon Measurement or Mitigation Professional.



Environment and Public Health (EPH) Program

In New Jersey, the front line of defense in environmental protection is your local health department. New Jersey's 98 health departments, some representing towns and some covering entire counties, have wide-ranging responsibilities dedicated to protecting the health of their residents and the environment.

Few jobs in our economy demand such a wide range of skills as that of a public health officer. To meet that challenge, OCPE, in partnership with the New Jersey Department of Health, offers an eight-week Environment and Public Health Program. The program has strict criteria for acceptance, as defined by the state, and requires a 200-hour field training component at a New Jersey health department. After completing the EPH program and internship, applicants are qualified to sit for the New Jersey certification exam to become a Registered Environmental Health Specialist (REHS). In New Jersey, the job of an REHS is an intensive, challenging, and inspiring experience.

“ EPH helped me find placement as an intern where I got hands on training and the chance to build connections with wonderful people who are experts in their field. Shortly after, I landed a job as a full-time REHS at a local health department. Without the EPH course, none of this would have been possible.

- Emily Espinal, REHS, Maplewood Health Department, Maplewood, NJ

Air and Noise Enforcement Training Programs Administrative Support

Since 2021, OCPE has provided administrative support to SEBS Department of Environmental Science for their Air Pollution Training (RAPTP) and Noise Technical Assistance (RNTAC) programs. Encompassing a total of 28 courses over a calendar year, these programs train personnel from the fields of public safety, public health, environmental management, and private industry to evaluate and document compliance with local, state, and/or federal noise and visible emissions standards.



“ The services OCPE provides to the Air and Noise Programs are vital and are executed with timely precision and a smile. - Eric Zwerling, Director, Rutgers Noise Technical Assistance Center

Build Sustainable and Resilient Communities

New Jersey Clean Communities Coordinator Certification Training

Nearly ten years ago, Sandy Huber, then-Executive Director of the New Jersey Clean Communities Council (NJCCC), approached OCPE for assistance in developing a certification program for municipal and county Clean Communities coordinators across the state. The NJCCC is a statewide litter-abatement program funded by a tax on designated business categories. The funds are distributed annually to counties, municipalities, and the New Jersey State Park Service. Highly visible programs such as Adopt-A-Highway are key parts of their efforts to keep New Jersey clean and green.

This course has evolved into a three-day session that presents information on topics ranging from programming and statistical reporting to budgeting/cost management, ethics, effective communication skills, field clean-up, safety, and volunteer management. Over 750 registrations later, the program is still going strong, with certified coordinators actively working toward the statewide implementation of New Jersey's bag and straw bans and local cleanup projects such as underwater debris cleanup and New Jersey Transit station litter patrols.



New Jersey Food Council

OCPE has been involved with the New Jersey Workforce Development Partnership Program (WDP) almost since its establishment in 1992 under the New Jersey Department of Labor (DOL). The Customized Training program is designed to benefit both employees and employers by enhancing the skills of workers, thereby increasing their productivity and the competitiveness of the employers.

In FY23, the New Jersey Food Council (NJFC) was awarded a \$149,800 grant from the UPSKILL: NJ Incumbent Worker Training Grant program offered through the New Jersey Department of Labor and Workforce Development (NJLWD) to support food handlers and provide safety training for New Jersey supermarkets, grocers, and convenience stores.

The funding will continue the partnership between the NJFC and OCPE, which administers the grant project. Training is offered to NJFC member companies to provide food handlers with extensive and required state and federal food safety and sanitation training. The training is a collaboration with ServSafe, through the National Restaurant Association, as well as SafeMark Supermarkets through the National Registry.

Customized Training

In the past two decades, well over 178,000 employees of top companies, non-profits, and local, state and federal agencies have benefited from the customized corporate training courses we offer both in-house and online. These professional development courses and staff development days make the organizations more competitive while giving the employees the skills they need to be more effective, productive, and engaged members of the organization.

In the past 15 years, we have provided in-house training (in-person or online) to employees at over 500 companies, municipal, state and federal agencies, and non-profits as well as to employees at 52 units within Rutgers. Our clients are national and international. Our course catalog continues to expand to meet the needs of our clients.

In FY23, OCPE facilitated more than 300 sessions on behalf of 65 clients, and trained over 11,000 people in-person and online.

Selected Course Topics:

- Building Relationships
- Business Development
- Communication
- Critical Thinking
- Diversity Awareness
- Emotional Intelligence
- Harassment in the Workplace
- Human Resources SHRM
- Innovation/Growth
- Management/Supervisory Skills
- Project Management PMP



Ensure Positive Outcomes for Our Youth

4-H Youth Program

As the youth development program for Rutgers Cooperative Extension, 4-H plays a critical role in delivering instruction and resources to the youth of New Jersey. When the COVID-19 pandemic forced the youth leadership programs to transition to an online format, OCPE stepped in to provide seamless online registration and ensure that these important programs for the state's young people continued uninterrupted. OCPE continues to support registration for all of these programs that remain online. Additionally, OCPE facilitates on-campus meetings for the 4-H Bat Watching Group, ensuring that, regardless of format, leadership and development opportunities continue for New Jersey's youth.



Future Farmers of America

Rutgers University has long partnered with the Future Farmers of America (FFA) to develop young leaders in the state's agricultural industry. Each November, OCPE assists the FFA and the School of Environmental and Biological Sciences to bring FFA students to the university's Cook Campus for *Fall Career Development Events*, in which participants learn about a variety of subjects from across the agricultural spectrum, such as forestry, turf management, and fruit and vegetable identification.

IMPACT: Financial

OCPE supports the mission of Rutgers Cooperative Extension by not only offering much sought after programs to the community, but by leveraging and strengthening the existing resources within RCE to amplify the goals and values of the university.

Whenever possible, OCPE programs are designed and led by the expertise of Rutgers faculty members. In FY23, OCPE contributed more than \$100,000 to university faculty in this capacity—supporting dozens of departments within RCE and Rutgers—and provided an additional \$59,000 to other departments via use of internal services such as information technology, dining services, and conference registration.

This model ensures these financial resources stay within Rutgers and furthers our mission as a land-grant institution by enabling students to benefit from the wealth of information and resources long cultivated by the university.

Acknowledgment of Support

The Office of Continuing Professional Education gratefully acknowledges the time, resources, and expertise our subject matter experts have shared with us, without which we would be unable to serve the many communities that have come to rely on us, both in New Jersey and around the world. Our programs have greatly benefited from the contributions and collaborations of multiple state agencies and nonprofit organizations, such as the New Jersey Department of Environmental Protection and the New Jersey Department of Labor. Finally, we would also like to extend our deepest gratitude to our external funders for their invaluable assistance.

Our Team

Office of the Director

Director: Karen Plumley
Administrative Coordinator: Rosemary Mahony
Administrative Assistant: Donna Rafano

Workforce Development: Open Market Courses and Customized Training

Assistant Directors: Carol Broccoli, Kathleen Marrs
Program Coordinators: Marianne Bennett, Laura Boyd, Joe Canzano, Sharon Gutterman, Suzanne Hills, Pam Springard-Mayer, Jill Sullivan, Olga Welsh
Administrative Assistants: Claudine Oleskin, Damiana Parada, Evan Portadin, Amy Smith, Latriece Smith
IT System Administrator: Joe Delgado
Instructional Technologist: Brian Warzak

Registration and Marketing:

Senior Project Administrator Supervisor: Rebecca Rathmill
Program Coordinator: Jennifer Procanik
Administrative Assistants: Donna Genito, Louise Govlick
Web Designer: Elizabeth Ryan

Business Unit

Business Manager: Heung Mac
Business Specialist: Mike Kaczala
Business Assistants: Ann Hughes




Where to Find Us


 facebook.com/RutgersOCPE

 twitter.com/rutgersocpe

 youtube.com/user/RutgersOCPE

 linkedin.com/in/rutgers-ocpe-45a8a313

 ocpe@njaes.rutgers.edu

 848.932.9271

